



## 2023 ANNUAL REPORT

# Thanks TO OUR DONORS & SUPPORTERS

| Donor             | Supporter |
|-------------------|-----------|
| The Walker family | DIAMOND   |
| Perron Foundation | GOLD      |
| Iffla Family      | SILVER    |
| Gary Brown-Neaves | BRONZE    |
| Anderson Family   | BRONZE    |
| Dick Lester       | BRONZE    |
| Julie Beeck       | BRONZE    |
| Tony Sullivan     | BRONZE    |

Our work would not be possible without our loyal supporters who are generous with their goods or services:











- As we do not receive any State or Federal funding, we were the appreciative recipients of grants from:
- Government Building Tenant Rental Credit Scheme
  - Stronger Communities Programme
  - Small Business Hardship

## Corbett the Bear's Story



Featured on our cover page this year is Corbett the Bear who is named after WWII veteran and philanthropist John Corbett and his son Keith. Whilst John faced battles in Syria and Lebanon and was awarded the African Star and Defence Star, the real test of his courage and determination was when his son Keith was born with Down Syndrome at a time where society attached great stigma to people with intellectual disability. John challenged barriers to schooling, independent living and community participation and his work formed the basis of so much of what we now take for granted. As an ageing parent, John was continually worried about who would be there to ensure Keith was protected when he was no longer around. He found the answer in Future Living and the services we provide to help parents plan and protect their children to participate in a safe and secure future. Whilst Keith and John are no longer with us, their legacy lives on in Corbett the Bear and in the work Future Living does every day.

## The Board of Directors held eight meetings during 2022/23

| Board Members & Attendance |     |
|----------------------------|-----|
| Ms Julie Beeck             | 8/8 |
| Mr Ken Booth               | 7/8 |
| Mr Larry Iffla             | 8/8 |
| Ms Robyn Massey            | 1/3 |
| Mr Patrick Moran           | 5/5 |
| Mr Geoff Patching          | 5/5 |
| Mr Geoff Reiser            | 7/8 |
| Mr Kerry Smart             | 7/8 |
| Ms Marita Walker           | 4/5 |
| Mrs Leonie Walker          | 2/3 |
| Mr Lee Watson              | 3/3 |
| Ms Holly Wood              | 5/5 |

# CONTENTS

|                                       |    |
|---------------------------------------|----|
| Who We Are .....                      | 01 |
| Board & CEO.....                      | 02 |
| 2022-23 Financial Year Snapshot ..... | 04 |
| Chair's Report.....                   | 06 |
| Chief Executive Officer's Report..... | 08 |
| Financial Statements .....            | 09 |



# WHO WE ARE

Our mission is to enable families of people with developmental disability to plan and implement services that enhance their quality of life and provide a long-term secure future.

We offer a unique range of support and services in response to the question families most often ask:

“ Who will be there to look out for our family member when we are not? ”

Our services are grouped under the three pillars of Plan, Participate and Protect and we are looking to broaden our reach to also support people living with acquired brain injury.

### Plan

- Navigation
- Safe & Secure

### Participate

- Support Coordination

### Protect

- Personal Safeguarding Service
- Financial Trusts\*
- Property Trusts\*



\*Disclaimer: Future Living does not provide financial services advice and does not hold a financial services license

# BOARD *and* CEO

The Future Living Board and Executive staff have a wealth of knowledge and experience from the Legal, Accounting, Banking and Finance, Strategic Management, Education, Clinical, Disability, Advocacy, Project Management, and Marketing professions

## Ms Julie Beeck BCom, GAICD

Chair from 2015 and Board Member since 2001.

Julie is a marketing consultant with over 30 years' experience providing research, business intelligence and marketing strategy services to organisations across the public, private and not-for-profit sectors. Julie has been a Board Member of several private and not-for-profit organisations and is a Graduate of the Australian Institute of Company Directors.

## Mr Geoff Reiser BCom, MAICD

Board Member from 2020 and Deputy Chair from 2021.

Geoff is the founder and Managing Director of Haeberlin Consulting, a strategy consulting firm working with Boards and Executive teams across Government, business and not-for-profit organisations. He is currently a Board member of WestCycle and Keystone Training Group, with previous memberships including the Curtin School of Marketing Advisory Board, WorkFocus Australia, atWork Australia and the National Disability Recruitment Co-ordinator Advisory Panel.

## Mr Geoff Patching BCom, CA

Board Member from 2022 and Treasurer from 2022.

Geoff has over 20 years' experience in the financial services industry and is the Chief Financial Officer of PeopleKind Group Ltd. He is a member of Chartered Accountants Australia and New Zealand and Australian Institute of Company Directors. Geoff has held a number of senior roles across commercial and not-for-profit organisations in both Australia and in the UK.

## Mr Ken Booth BSc Dip Ed., M.Ed. Admin

Board Member since 1995 and Secretary since 2001.

Ken is a practising Civil Celebrant and had a prior 35-year career with the Education Department of Western Australia. Ken has a brother with a developmental disability and is an Honorary Life Governor and member of the Council of Activ Foundation.

## Mr Laurence (Larry) Iffla B.Juris, LL.B, MAICD

Board Member since 1993 and Chairman from 1996 to 2015.

Larry is a partner of Iffla Wade, where he practices in commercial and property law. He is Deputy Chair, Council of Activ Foundation and was until recently a Director at the Harry Perkins Institute of Medical Research. He is the Non-Executive Chairman of the Perron Group. Larry has a brother with a developmental disability and his family has had a long association with Activ Foundation.

## Mr Kerin Smart LL.B

Board Member since 2009.

Kerin spent 40 years as a corporate and commercial lawyer and now devotes much of his time to working with families with disabled children to plan for their future, including the preparation of Wills, Testamentary and Protective Trusts and Powers of Attorney for those families. Kerin has a close family member with a developmental disability.

## Marita Walker BSc, Grad Dip (Physio), Grad Dip (Neuroscience), MAppSc

Board Member since 2022.

Marita has worked in the disability sector for over 35 years in state government; the NGO sector [where she was CEO of Perth Home Care Services (now Avivo)] for 14 years and most recently in the National Disability Insurance Agency. Marita also has personal experience as the guardian of a person with disability. Since the inception of Future Living, Marita has had varying levels of involvement. She is now contributing as a Board member.

## Holly Wood BA

Board member since 2022.

Holly has 20 years' experience delivering communications and public relations services, specialising in health, mental health and human services. One of her brothers has a developmental disability and lives in a residential care facility. Her other brother experiences mental illness and is cared for by her parents.

## Patrick Moran MBA

Board member since 2022.

Patrick has over 15 years leading not for profit organisations to deliver on their purpose. He has an interest in applying commercial discipline and best practice to increase social impact. With a passion for inclusion Patrick is driven to create a more equitable community for all.

## Dr Samantha Neylon PhD, BSc (Occupational Therapy), Dip Project Management, Dip Business

Chief Executive Officer

Sam has worked in service development, management, clinical, design and research domains in sectors supporting older Australians and those living with disability for over 25 years. With a focus on maximising engagement opportunities, team development and service outcomes, Sam strives to ensure clients, families and teams are supported to enable people to live the lives they choose.

## Joint Patrons

Future Living was honoured to welcome His Excellency the Honourable Chris Dawson AC APM Governor of Western Australia, and Mrs Darrilyn Dawson as joint patrons of Future Living. We greatly appreciate their support of the work we do.



# 2022-23 FINANCIAL YEAR SNAPSHOT

Under our Plan, Participate and Protect pillars, here are some examples from our work this year which demonstrate the breadth of services Future Living provides.

## Navigation

One of the ways families can plan for the future is through our navigation service where we listen to your situation and your needs to help you map out your journey. This may involve provision of resources and pathways such as a referral to a lawyer, superannuation expert or a financial planner.

“Future Living moved quickly to assist Peter when his wife was unwell, and after her passing. Will pathways and Support Coordination were subsequently engaged. In his compliments, Peter noted that both have been very helpful and that Future Living was a wealth of knowledge.”

## Safe and Secure

We held two Safe and Secure forums this year, which were well attended. These forums provide an overview of various considerations for parents to plan and protect their son or daughter's future in addition to links to resources relating to estates, trusts and independent living. The fabulous feedback received included:

“Thank you for putting this event together, it is good to keep educating and keeping it in forefront of mind. Worth coming to from north of Perth. Well worthwhile... now we can take ACTION! Great service by dedicated individuals.”

## Support Coordination

This service helps individuals to understand, activate and make the most of the funding in their NDIS plan. Families who have consulted Future Living as part of their planning process are often considering what living arrangements will be most suitable for when their loved one can no longer live with them. Our Support Coordinators have assisted with exploring options such as Independent Living Options, Supported Independent Living or Independent Living with drop-in supports and initiate funding reviews as the first step in this process.

“Support Coordination has expanded with a 36% increase in new clients engaging our Support services this year.”

## Personal Safeguarding Service

Visitors monitor the needs of the individual with a disability much as a parent would do themselves under our PSS bi-monthly (or monthly) visiting service implemented once the parents have passed away. This independent service ensures all aspects of a person's welfare are monitored and reported to Future Living so that any concerns can be addressed. The visitor considers the individual's personal and emotional needs, remembers birthday and Christmas presents, supports any family cultures and traditions as well as maintaining the individual's social networks.

“A longstanding Future Living PSS client passed away in October 2022. At the funeral service, his nephew spoke about the PSS Visitor who had been visiting since 2013 and commented how much his Uncle had always enjoyed and looked forward to their time and outings together.”

## Financial Trusts

Future Living provides a secure managed trust fund service (including Special Disability Trusts) which can be set up now or through a will and is designed to meet the ongoing needs of the individual with disability. We ensure the funds are used to support the son or daughter's needs as per the wishes outlined in the trust agreement.

“One of our clients wanted to undertake an overseas trip to maintain his family connections. We worked closely with his Support Coordinator and Service Leader to determine what could be funded through his property fund, NDIS and Special Disability Trust. We coordinated the movement and subsequent release of the funds and he had a very enjoyable holiday.”

## Property Trusts

Future Living can accept property as a bequest or through a Trust to be securely held and managed for your family member to live in for their lifetime. We support fully gifted properties or those on a life interest basis.

“Residing in our Palmyra property, our client sought a transformation for their kitchen cabinets and benchtops. We assumed full responsibility for the project from the diligent review and selection of a contractors, meticulous evaluation of quotes, through to the expert management of the renovation process. As our client returned from a well-deserved vacation, they were greeted by a beautifully renovated and revitalised space!”



# 2023 CHAIR REPORT

I'm pleased to present Future Living's Annual Report for 2023.



Over the last year, the needs and rights of people with disability have been discussed more widely than ever, with the culmination of the four-year Disability Royal Commission as well as the Independent Review of the NDIS announced by the Hon Bill Shorten MP in October 2022. While both are intensive examinations highlighting multiple challenges, they have reinforced the essential need for long-term safeguarding of people with disability, particularly for anyone with a developmental disability who has no one else to look out for their wellbeing and safety.

“ At Future Living we take heart from the wider recognition of these issues. We know that the long-term safeguarding of people with developmental disability is a hidden need which Future Living has been working to support for over 30 years. ”

We continue to engage with new families every year, knowing there are many more individuals who could benefit from the planning, participation and protection that comes from accessing Future Living services. Regular feedback from our clients and their families shows that Future Living services deliver critically important and high-quality outcomes. This year's Annual Report shares a few examples of the outcomes achieved with Future Living this last year.

As a Board, we maintain a focus on ensuring quality outcomes and this year we formalised this with a Quality and Safeguarding Subcommittee, headed by Marita Walker alongside Ken Booth. The focus of this Subcommittee is to ensure a proper level of Board oversight of our clients and maintain a culture of Board connection with the people we support.

Like any not-for-profit organisation, a considerable amount of the Board's time is also committed to ensuring the financial health and long-term sustainability of the organisation. Our Finance and Investment Subcommittee, led by Deputy Chair Geoff Reiser with Treasurer Geoff Patching, continues to monitor the management of trust funds and our own reserves, as well as the financial sustainability of our operations. Future Living is dependent on its own resources as we do not receive any government funding (other than occasional grant-funded initiatives). Therefore, we work extremely hard to balance our revenues from fee-for-service income with the support of donors, pro bono supporters and foundations through fundraising initiatives.

A major focus in the past year has been developing an updated fundraising strategy to increase our capability and capacity in fundraising and to create a stronger supporter base. This strategy is still in the early stages of implementation and will be one of the key platforms that underpins our ability to maintain our breadth of services. This year we introduced a new Fundraising Subcommittee to guide this vital work, chaired by myself alongside Larry Iffla and Holly Wood.

Speaking of supporters, I'd therefore like to sincerely thank all the individuals and organisations who have given generously to Future Living in the last year with their donations, time or expertise. The more people that learn about the work we do, the more we hope to attract new supporters to get behind our unique and essential offering.

## Acknowledgements and thanks

The last year has seen personnel changes at Future Living, most notably the arrival of our new CEO, Samantha Neylon. Sam's breadth and depth of experience has made a hugely positive impact on the organisation from day one. I would also like to acknowledge the incredible dedication of our Executive team during the transition of CEO, in particular Mary-Jane Meehan (Partnerships Lead), Cassie Brickell (Client Services Coordinator) and Caroline Nguyen (Finance and Office Admin).

We continue to enjoy the benefits of long-term Board members who bring incredible experience to the table, alongside some new faces. In the last year we were joined by incoming Board members Holly Wood, Marita Walker and Geoff Patching.

This year's AGM will see two Board members step down and I'd like to take this opportunity to recognise the contributions of them both.

Kerry Smart has given 14 years of service as a Future Living Board member, though his contribution to our organisation and the lives of our clients and families goes well beyond his attendance at Board meetings. Kerry has combined his deep understanding of estate law with incredible empathy and compassion for families and those who need the security of Future Living to deliver benefits that will truly last for lifetimes. We are all very grateful for Kerry's commitment and wish him the very best.

Patrick Moran has been a Board member for the last year and actively contributed through his experience in the sector and his capability for sound management. We were sad that Patrick has had to step down from the Board for personal reasons. We wish him well and will stay in contact.

Finally I would like to thank all continuing Board members for their ongoing commitment to Future Living, their wisdom and enthusiasm. I am very confident that the organisation is in good hands.

Julie Beek  
CHAIR

# 2023 CEO REPORT

It is a privilege to write this year’s annual report as the new Chief Executive Officer of Future Living.



The warm welcome by the board, team, clients, families and stakeholders has been greatly appreciated. I extend my gratitude to Yvonne Parnell for her work at the helm of this wonderful and unique organisation for so many years in addition to cheerfully moving in and out of her well-earned retirement to support the transition.

The song ‘You’ll Never Walk Alone’ resonates with lovers of Rodgers and Hammerstein’s musical *Carousel* along with Liverpool football club fans and it has a similar message to Future Living’s ethos to offer support to families of Western Australians living with developmental disability. This has never been more crucial following on from the final report from the Royal Commission into Violence, Abuse, Neglect and Exploitation of People with Disability, as well as various examples reported in the media which show the need for greater safeguards for people with disability as individuals with intellectual or developmental disabilities may be particularly vulnerable.

“ Since 1989, Future Living has focused on enabling families to plan and implement services to enhance quality of life for their family members and ensure a secure future so that they do not have to walk alone. ”

The Commission’s findings have only served to reiterate the importance and value of what we do. Our Personal Safeguarding Services are not new to Future Living, but we have re-energised our approach to communicating this vital support more broadly. Under Cassie Brickell’s expert guidance, the Support Coordination has continued to grow, and we intend to develop this further in the coming year.

Due to a generous family donation and pro-bono support from our skilled presenters and guest speakers including Kerry Smart and Carers WA, two of our popular Safe and Secure face to face forums were held again this year. Future Living was well represented by the team at the Abilities Expo held at the Crown Perth and were invited to present at various events throughout the year.

We held a successful launch night for the Thriving Lives art exhibition on Friday 10th March 2023 at the Art Marx Gallery in Fremantle which was well attended. The exhibition continued for a further four days with the gallery reporting they had a steady flow of visitors appreciating the artwork on display.

The funding landscape continues to be challenging for charities and not for profit organisations with fewer grant opportunities available. Future Living has worked hard to develop a fundraising and growth strategy and the multi-talented Mary-Jane Meehan will focus on implementing this in the coming year with some exciting events planned.

From a financial perspective, the net position of Future Living has increased in FY22-23 compared to FY21-22 i.e.:

- Total comprehensive has increased by \$44,255
- Total equity has increased by \$89,442
- Cashflow net cash and equivalent at EOFY has increased increased by \$13,125

Whilst Caroline Nguyen was new to Future Living this year, we are already seeing the results of her deft hand in systems improvements and efficiencies in the financial and administration arenas.

I look forward to the next year working with the wonderful team of staff, facilitators, and volunteers to grow and develop further our valued services and guidance to clients and families so that they do not need to walk through life’s journey alone. I would like to thank all donors, supporters, clients, families and friends, and particularly the Chair and Board for their guidance and support.

Dr Samantha Neylon

CEO | OCTOBER 2023

# 2023 FINANCIAL STATEMENTS

Future Living Trust Incorporated  
ABN: 62 492 609 487

## STATEMENT OF FINANCIAL POSITION As at 30 June 2023

|                                      | Note | 2023<br>\$       | 2022<br>\$       |
|--------------------------------------|------|------------------|------------------|
| <b>ASSETS</b>                        |      |                  |                  |
| <b>CURRENT ASSETS</b>                |      |                  |                  |
| Cash and Cash Equivalents            | 4    | 160,556          | 147,431          |
| Trade and Other Receivables          | 5    | 48,701           | 47,708           |
| Other Assets                         | 7    | 1,112,050        | 1,028,437        |
| <b>TOTAL CURRENT ASSETS</b>          |      | <b>1,321,307</b> | <b>1,223,576</b> |
| <b>NON-CURRENT ASSETS</b>            |      |                  |                  |
| Property, Plant and Equipment        | 6    | 565,491          | 544,022          |
| <b>TOTAL NON-CURRENT ASSETS</b>      |      | <b>565,491</b>   | <b>544,022</b>   |
| <b>TOTAL ASSETS</b>                  |      | <b>1,886,798</b> | <b>1,767,598</b> |
| <b>LIABILITIES</b>                   |      |                  |                  |
| <b>CURRENT LIABILITIES</b>           |      |                  |                  |
| Trade and Other Payables             | 8    | 36,615           | 13,634           |
| <b>TOTAL CURRENT LIABILITIES</b>     |      | <b>36,615</b>    | <b>13,633</b>    |
| <b>NON-CURRENT LIABILITIES</b>       |      |                  |                  |
| Employee Benefits                    |      | 31,250           | 30,000           |
| Income Received in Advance           |      | -                | 4,000            |
| Trust Liabilities                    | 9    | 373,059          | 365,621          |
| Sinking Fund for Properties          | 10   | 18,636           | 16,548           |
| <b>TOTAL NON-CURRENT LIABILITIES</b> |      | <b>422,945</b>   | <b>416,169</b>   |
| <b>TOTAL LIABILITIES</b>             |      | <b>459,560</b>   | <b>429,802</b>   |
| <b>NET ASSETS</b>                    |      | <b>1,427,238</b> | <b>1,337,796</b> |
| <b>EQUITY</b>                        |      |                  |                  |
| Asset Revaluation Reserve            |      | 27,409           | 10,485           |
| Retained Earnings                    |      | 1,399,829        | 1,327,311        |
| <b>TOTAL EQUITY</b>                  |      | <b>1,427,238</b> | <b>1,337,796</b> |

## STATEMENT OF COMPREHENSIVE INCOME

For the Year Ended 30 June 2023

|   | Note | 2023<br>\$    | 2022<br>\$    |
|---|------|---------------|---------------|
| Revenue and Other Income                            | 3    | 681,200       | 513,789       |
| Net Rental Income                                   | 14   | 2,784         | 3,468         |
| Bequest, Fundraising and Donation Expenses          |      | (112,147)     | (84,004)      |
| Depreciation Expense                                |      | (2,823)       | (2,382)       |
| Employee Benefits Expense                           | 16   | (356,849)     | (304,563)     |
| Other Expenses                                      |      | (148,457)     | (108,982)     |
|   |      | <b>63,708</b> | <b>17,326</b> |
| <b>Less Current Year's Distribution of Interest</b> |      |               |               |
| Interest Distributions                              |      | <b>9,145</b>  | <b>11,272</b> |
| <b>Profit before Income Tax</b>                     |      | <b>72,853</b> | <b>28,598</b> |
| Income Tax Expense                                  |      | -             | -             |
| <b>Total Comprehensive Income for the Year</b>      |      | <b>72,853</b> | <b>28,598</b> |

## STATEMENT OF CHANGES IN EQUITY

For the Year Ended 30 June 2023

|                                | Note | Retained Earnings<br>\$ | Asset Revaluation Reserve<br>\$ | Total<br>\$      |
|--------------------------------|------|-------------------------|---------------------------------|------------------|
| <b>Balance at 1 July 2022</b>  |      | <b>1,327,311</b>        | <b>10,485</b>                   | <b>1,337,796</b> |
| Profit/(Loss) for the Year     |      | 72,853                  | -                               | 72,853           |
| Revaluation of Properties      |      | -                       | 16,924                          | 16,924           |
| Prior Year Adjustment          | 15   | (335)                   | -                               | (335)            |
| <b>Balance at 30 June 2023</b> |      | <b>1,399,829</b>        | <b>27,409</b>                   | <b>1,427,238</b> |

|                                      | Note | Retained Earnings<br>\$ | Asset Revaluation Reserve<br>\$ | Total<br>\$      |
|--------------------------------------|------|-------------------------|---------------------------------|------------------|
| <b>Balance at 1 July 2021</b>        |      | <b>1,315,950</b>        | <b>(5,819)</b>                  | <b>1,310,131</b> |
| Profit/(Loss) for the Year           |      | 28,598                  | -                               | 28,598           |
| Revaluation of Properties            |      | -                       | 16,304                          | 16,304           |
| Employee Benefits Expense Adjustment | 16   | (17,237)                | -                               | (17,237)         |
| <b>Balance at 30 June 2022</b>       |      | <b>1,327,311</b>        | <b>10,485</b>                   | <b>1,337,796</b> |

## STATEMENT OF MANAGED TRUST FUND MOVEMENT

For the Year Ended 30 June 2023

|  | 2023<br>\$       | 2022<br>\$       |
|--|------------------|------------------|
| <b>DEPOSITS</b>                                      |                  |                  |
| Establishment of The MF Trust Fund                   | -                | 200,000          |
| Establishment of The SK Memorial Fund                | -                | 335,686          |
| Interest   | 9,048            | 1,404            |
| Investment Earnings                                  | 16,790           | (250,241)        |
| Trust Funds Deposits                                 | 84,722           | 346,926          |
| <b>TOTAL DEPOSITS</b>                                | <b>110,560</b>   | <b>633,775</b>   |
| <b>WITHDRAWALS</b>                                   |                  |                  |
| Closure of Beyond Bank Accounts                      | 11,486           | -                |
| Trust Fund Payments                                  | 109,342          | 56,255           |
| Transfers to Term Deposits                           | -                | 240,000          |
| <b>TOTAL WITHDRAWALS</b>                             | <b>120,828</b>   | <b>296,225</b>   |
| <b>NET MOVEMENT FOR THE YEAR</b>                     | <b>(10,268)</b>  | <b>337,520</b>   |
| <b>Represented by:</b>                               |                  |                  |
| Austock Insurance Bonds                              | 2,420,196        | 2,287,437        |
| Beyond Bank Term Deposits                            | -                | -                |
| Beyond Bank Accounts                                 | 550              | 585,508          |
| Residential Property                                 | 820,000          | 820,000          |
| <b>Total Trust Funds held at beginning of year</b>   | <b>4,030,465</b> | <b>3,692,945</b> |
| <b>Net Movement for the year</b>                     | <b>(10,268)</b>  | <b>337,520</b>   |
| <b>Total Trust Funds held at the end of the year</b> | <b>4,020,197</b> | <b>4,030,465</b> |

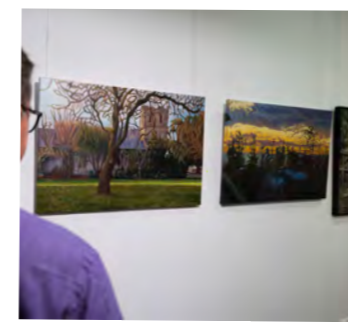
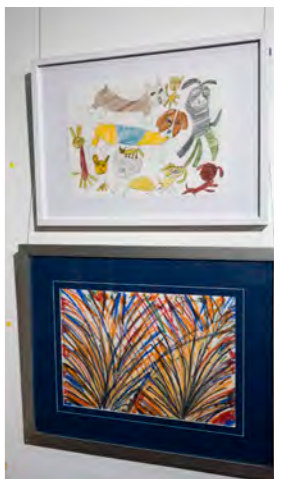
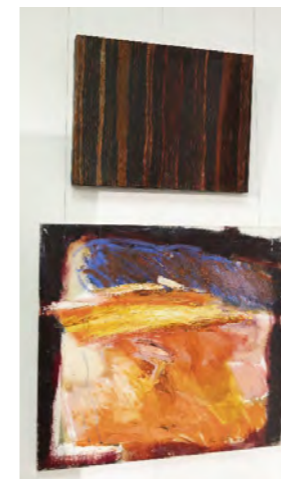
This is a condensed version of the 2023 Financial Reports, a full version is available on request.

# March 2023 THRIVING LIVES ART EXHIBITION

“ Art is not what you see, but what you make others see ” — EDGAR DEGAS



Brian's vibrant artwork featured on the invitation and flyers for the Thriving Lives Art Exhibition. A client of Future Living for many years, Brian also attended the opening of the exhibition with the assistance of his trusted Support Worker. Brian enjoys getting out into the community and had a lovely catch up with Future Living staff and other attendees on the night. He was thrilled to see his artwork on display!





FUTURE LIVING TRUST INCORPORATED

ABN 62 492 609 487

3/590 Hay Street, Subiaco WA 6008

**phone:** 08 6183 1943 **email:** [info@futureliving.org.au](mailto:info@futureliving.org.au)

**[www.futureliving.org.au](http://www.futureliving.org.au)**